

RiverBlitz 2020 Report

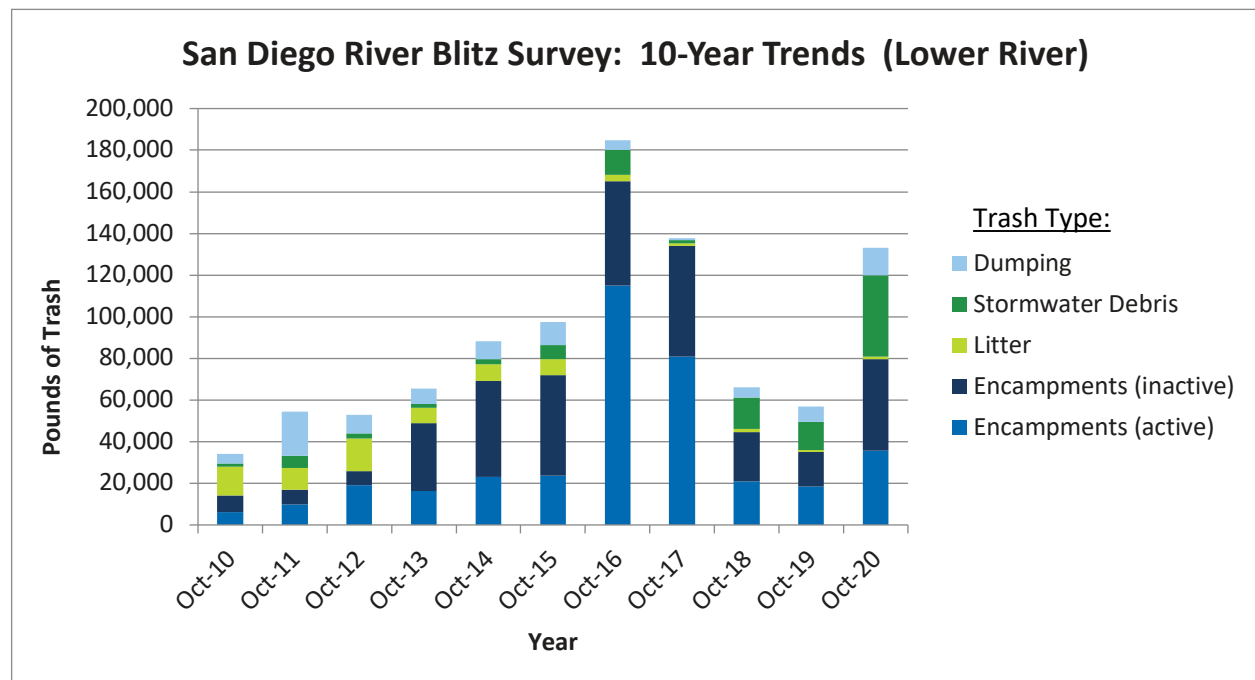
On October 13-24, The San Diego River Park Foundation coordinated volunteers to complete the 13th annual October RiverBlitz, a comprehensive citizen science effort to document and quantify trash along the San Diego River. This survey occurs along approximately 15.5 miles of the lower San Diego River in the cities of San Diego and Santee.

This point in time survey provides valuable trend information about the changing condition of the San Diego River over time. While COVID-19 resulted in increased protocols for safety and team size, trained volunteer leaders and interns joined staff to complete RiverBlitz using standard data collection protocols in 2020.

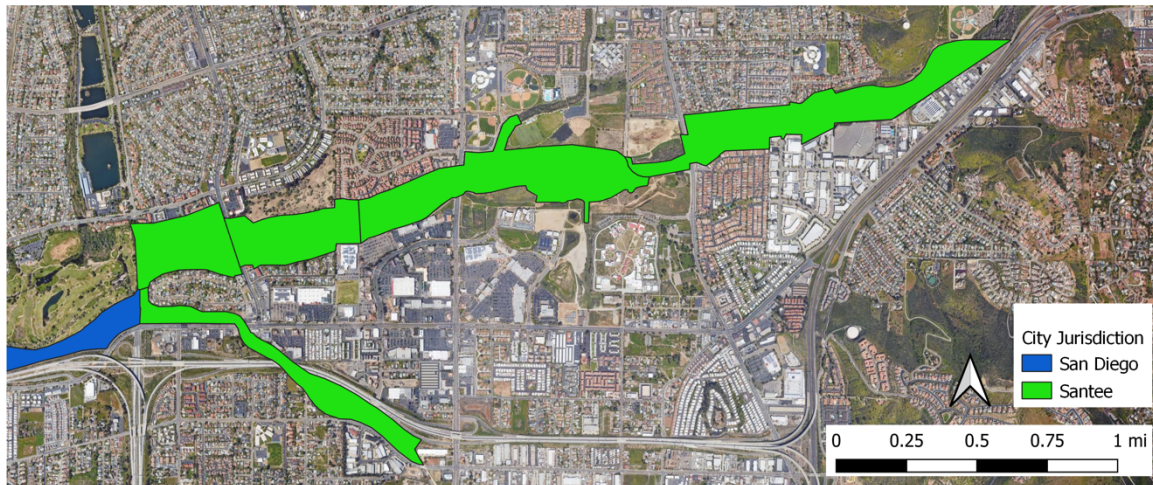
In addition to the October San Diego RiverBlitz, The San Diego River Park Foundation conducts ongoing assessments at least twice per week year-round to continually monitor and update data, informing clean-up and advocacy efforts through the River Assessment Field Team (RAFT) Program. This data is housed on our data portal: <http://www.immappler.com/sandiegorivertrash/>

RiverBlitz 2020 Quick Stats:

- 34 surveys conducted across 12 days, including 9 within the City of Santee
- 23 experienced volunteers filled 68 survey shifts, including 11 volunteers filling 31 survey shifts within the City of Santee
- 189 trash sites documented within Santee, including 21 which will require special removal
- 65,905 pounds of trash identified in San Diego Riverbed within Santee (breakdown follows)
- Largest trash source documented (by volume) is trash related to homeless encampments
- This is the highest

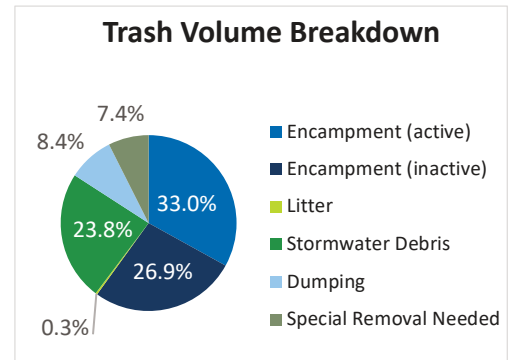


Riverbed Survey Area

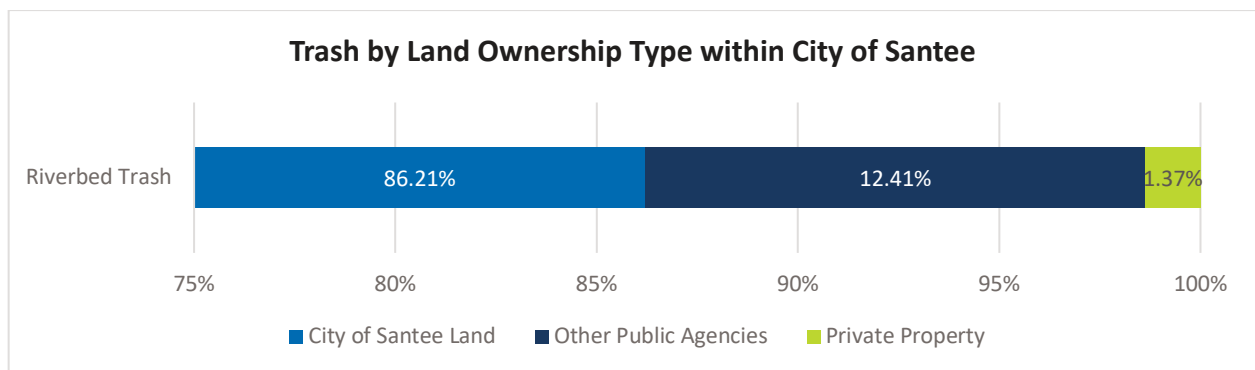


Total Trash in the San Diego Riverbed within City of Santee by Source

| Category | # Bags | # Pounds | # Sites |
|------------------------|--------|------------------------|---------|
| Encampment Trash | 622 | 21,770 | 28 |
| Inactive Encampment | 507 | 17,745 | 51 |
| Stormwater Debris | 449 | 15,715 | 39 |
| Dumping | 159 | 5,565 | 44 |
| Litter | 6 | 210 | 6 |
| Special Removal Needed | 140 | 4,900 | 21 |
| Sum: | 1,883 | 65,905 pounds of trash | 189 |



Trash by Land Ownership Type within City of Santee



How Do We Identify the Source of Trash?

Survey teams are trained to categorize trash by source. They reach consensus under guidance of the survey team leader, which is then reviewed by staff. Trash is categorized into one of the following categories.

| Category | Description: | Sample Photos |
|------------------------|--|--|
| Encampment Trash | Trash associated with an encampment that is active (or appears to be), which may be evaluated by presence of a person experiencing homelessness, or presence of items like folded clothes, tidy bed roll, cooking items or unopened food, or stored belongings |   |
| Inactive Encampment | Trash associated with an area that appears to formerly inhabited but abandoned at the time of survey, which may be evaluated by absence of items of value, when items are muddy or buried in leaf litter or clearly abandoned |   |
| Stormwater Debris | Trash that was carried to current location by water (such as recent stormwater, stormdrains, or other drainage) |   |
| Dumping | Trash comprised of usually larger items, often item discarded to avoid dumping fees or proper disposal (couches, chairs, shopping carts, bikes) |   |
| Litter | Trash accumulation usually near high-traffic areas, such as food-related trash and other everyday items over time |   |
| Special Removal Needed | Trash that might require removal by special tools (digging, winch, crane, etc.) such as tractor tires, large concrete, vehicles, dumpsters, and the like | <p><i>Depending on size and accessibility, some of these may be suitable for removal by River Park Foundation volunteer teams, while others may require removal but landowner or others.</i></p> |