

San Diego Regional Water Quality Data Portal

The San Diego Regional Water Quality Control Board along with the San Diego River Park Foundation and EcoLayers, Inc. have developed the San Diego Regional Water Quality Data Portal, or Portal. The Portal is a pilot project with a goal to improve all stakeholders' ability to access and use water quality data. The Portal includes a core set of water quality data that are accessible via the internet through a user friendly and familiar Google Map user interface.

To Access the Portal:

The Portal can be accessed on the web by visiting:

www.swrcb.ca.gov/rwqcb9/water_issues/programs/swamp/index.shtml

If you do not have access to a PC or the internet, you visit one of these kiosk locations to use the Portal. Please call ahead and schedule an appointment to view.

San Diego Regional Water Quality Control Board
9174 Sky Park Court, Suite 100
San Diego, CA. 92123-4340
Phone: 858 467-2952

San Diego River Park Foundation
4891 Pacific Highway
San Diego, CA 92110
Phone: 619 297-7380

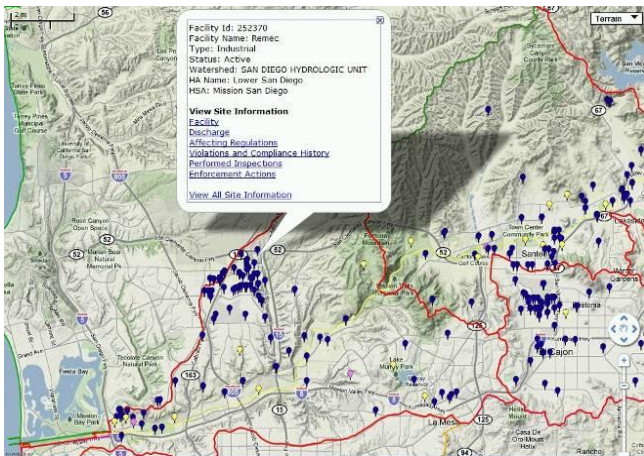
Examples of Portal's Water Quality Information-

Spatial

- Region 9 boundary
- San Diego County boundary
- Hydrologic Units 901 to 911 boundaries
- Rivers in San Diego County
- Lakes in San Diego County
- 303(d) impaired waters – Streams and water bodies
- Rain contours

Programs & Data

- California Surface Water Ambient Monitoring Program
- San Diego stormwater monitoring data: Dry weather runoff, Receiving Water, and Coastal Storm Drain
- 401 Projects and Mitigation sites
- CIWQS data: public reports
- USGS sites: Stream, lakes and groundwater sites
- 303(d): Streams and Water bodies
- San Diego Stream Team: Bioassessment data
- San Diego River Park Foundation: Citizen water quality monitoring data



Site ID	Site Name	SampleDate	Analyte	Result	MDL	RL
907SDALV3	Alvarado Creek 3	05/18/2004	Nitrite as N mg/L	0.005	0.005	0.01
907SDALV3	Alvarado Creek 3	05/18/2004	Nickel,Dissolved ug/L	0.009	0.006	0.018
907SDALV3	Alvarado Creek 3	05/18/2004	OrthoPhosphate as P,Dissolved mg/L	0.0217	0.005	0.01
907SDALV3	Alvarado Creek 3	05/18/2004	Cadmium,Dissolved ug/L	0.032	0.002	0.05
907SDALV3	Alvarado Creek 3	05/18/2004	Ammonia as N,Total mg/L	0.043	0.04	0.1
907SDALV3	Alvarado Creek 3	05/18/2004	Lead,Dissolved ug/L	0.074	0.002	0.05
907SDALV3	Alvarado Creek 3	05/18/2004	Phosphorus as P,Total mg/L	0.0894	0.03	0.05
907SDALV3	Alvarado Creek 3	05/18/2004	Nitrate as N mg/L	0.133	0.005	0.01
907SDALV3	Alvarado Creek 3	05/18/2004	Chromium,Dissolved ug/L	0.434	0.03	0.1
907SDALV3	Alvarado Creek 3	05/18/2004	Nitrogen, Total Kjeldahl mg/L	0.86	0.12	0.25
907SDALV3	Alvarado Creek 3	05/18/2004	Alkalinity as CaCO3 mg/L	191	3	8
907SDALV3	Alvarado Creek 3	05/18/2004	Suspended Solids,Total mg/L	21.74	5	5
907SDALV3	Alvarado Creek 3	05/18/2004	Sulfate mg/L	262	0.5	0.7
907SDALV3	Alvarado Creek 3	05/18/2004	Copper,Dissolved ug/L	3.35	0.003	0.01
907SDALV3	Alvarado Creek 3	05/18/2004	Aluminum,Dissolved ug/L	3.7	0.1	0.3
907SDALV3	Alvarado Creek 3	05/18/2004	Zinc,Dissolved ug/L	4.34	0.02	0.06
907SDALV3	Alvarado Creek 3	05/18/2004	Arsenic,Dissolved ug/L	5.37	0.1	0.3
907SDALV3	Alvarado Creek 3	05/18/2004	Selenium,Dissolved ug/L	7.85	0.1	0.3
907SDALV3	Alvarado Creek 3	05/18/2004	Manganese,Dissolved ug/L	9.25	0.003	0.01
907SDALV3	Alvarado Creek 3	09/13/2004	OrthoPhosphate as P,Dissolved mg/L	0.0214	0.005	0.01
907SDALV3	Alvarado Creek 3	09/13/2004	Cadmium,Dissolved ug/L	0.03	0.01	0.03
907SDALV3	Alvarado Creek 3	09/13/2004	Phosphorus as P,Total mg/L	0.0324	0.03	0.05
907SDALV3	Alvarado Creek 3	09/13/2004	Ammonia as N,Total mg/L	0.044	0.04	0.1
907SDALV3	Alvarado Creek 3	09/13/2004	Lead,Dissolved ug/L	0.06	0.01	0.03
907SDALV3	Alvarado Creek 3	09/13/2004	Nitrate as N mg/L	0.318	0.005	0.01
907SDALV3	Alvarado Creek 3	09/13/2004	Nitrogen, Total Kjeldahl mg/L	0.58	0.12	0.25

Special thanks to the following organizations and individuals have helped guide the development of the Portal:

Weston Solutions, David Pohl ;San Diego Stream Team, Gary Strawn; Foley Lardner, Wayne Rosenbaum; San Diego Coastkeeper, Clay Clifton



EcoLayers, Inc.

4685 Convoy St., Suite 210, San Diego, CA 92111

Phone: 858 780 9415

San Diego Regional Water Quality Data Portal

Building Connections and Improving Access:

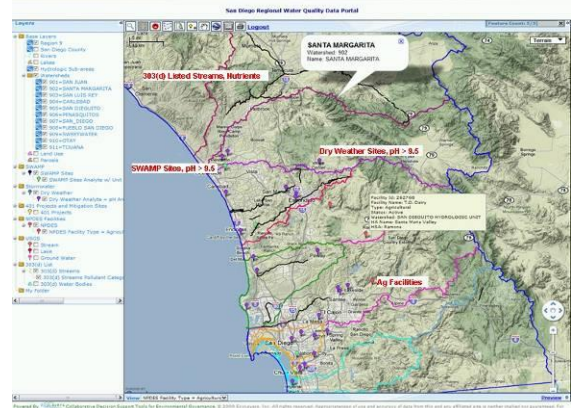
Public and media interest about water as a natural resource within San Diego County is focused on its supply and availability. What is often over-looked is that the quality of water is just as important in determining its potential uses and its impact on the larger ecosystem. Human activities and the ecosystem in turn affect water availability and quality.

A broad range of human activities with regard to water must conform to various federal and state laws and regulations. In our region, the San Diego Regional Water Quality Control Board (Waterboard), a California state agency, has the primary responsibility to develop, oversee and enforce water quality regulations¹.

The Waterboard has at its disposal a wide array of statutory, analytical, procedural and other mechanisms to perform its duties. Central to all these activities is information on various aspects of water quality and factors that affect water quality, either adversely or favorably. Various entities in the San Diego Region, including the Waterboard, environmental groups such as the San Diego River Park Foundation, and municipalities among others, collect and maintain such data for the purpose of assessment, regulatory compliance, enforcement, stewardship and citizen involvement.

Though all this data exists, access to it by the public and other interested stakeholders has historically been difficult; much of the data was on paper archives stored at central locations, or in numerous spreadsheets and data bases whose existence is known to only a few people.

The widespread use of computers, internet and low cost web technologies in preparing and submitting this data now makes it easier to increase access to a much broader audience at reasonable costs. The San Diego Regional Water Quality Portal was created in-part as a more cost effective means to increase public awareness of water quality issues and encourage public participation in improving water quality.



Some of the Portal's capabilities for public access include:

- Free, single point of access to several different water quality data sets
- Easy to use via any PC with internet connection². Simple online instructions are provided
- Entry page includes introduction and background information on water quality, protocols and data interpretation
- View monitoring sites on Google Map or Google Earth (requires download of Google Earth plug-in)
- Select only the data that you are interested in
- View data in different ways, e.g., tables, charts, histograms
- Download data and documents
- Print maps and charts
- Periodic updates to data

Current and future uses of the Portal include:

- Online submission of public comments and recommendations to the Water Board
- Additional spatial and water quality data
- Spatial querying and analysis
- More cost-effective water quality monitoring
- Assessing effectiveness of regulatory programs
- Online submission of regulatory compliance reports
- Support development and implementation of integrated regional water management plans
- Serve as a node in a network of other regional portals for data sharing and collaboration between stakeholders or co-permittees.

¹ <http://www.swrcb.ca.gov/rwqcb9/>

² Firefox or Google Chrome Browsers recommended